



COLD AIR INTAKE INSTALLATION INSTRUCTIONS

PART NUMBER D760-0047

APPLICATION: 2015-17 F85 X5 M
2015-17 F86 X6 M

Congratulations for being selective enough to use a Dinan Cold Air Intake Kit. We have spent many hours developing this kit to assure that you will receive maximum performance and durability with minimum difficulty in installation. Please take the time to read these instructions and call us if you have any difficulties during the installation.

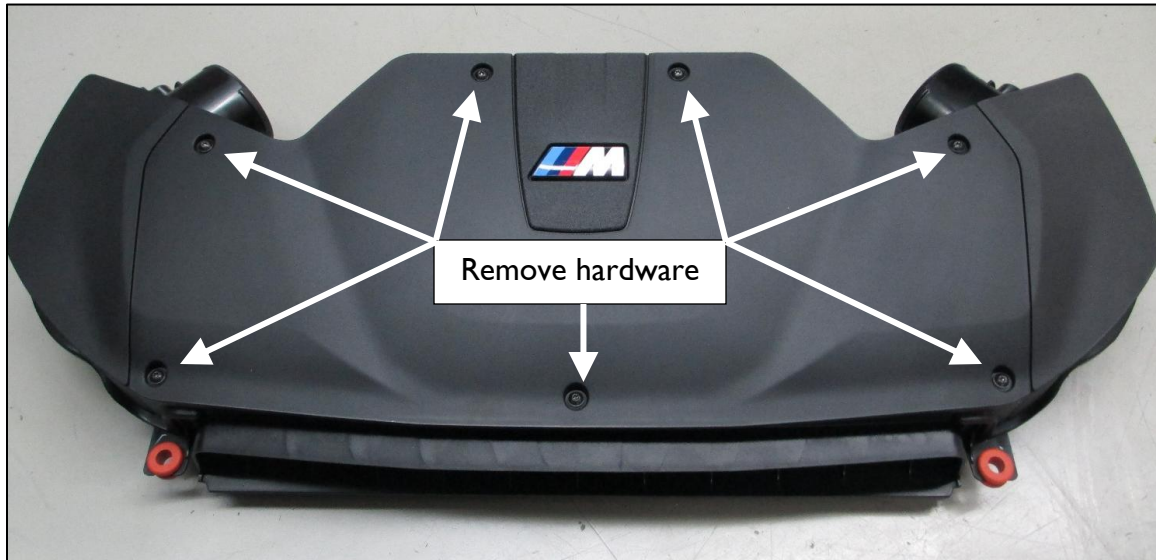
PARTS LIST

Qty	Part #	Description
1	D762-0210	Airbox Lid
1	D401-0023	Air Filter; Right
1	D401-0024	Air Filter; Left
1	D763-0158	Hardware Kit



INSTALLATION:

1. Remove the hardware securing the BMW factory intake lid and remove lid. Save these screws for installation of the Dinan Cold Air Intake.



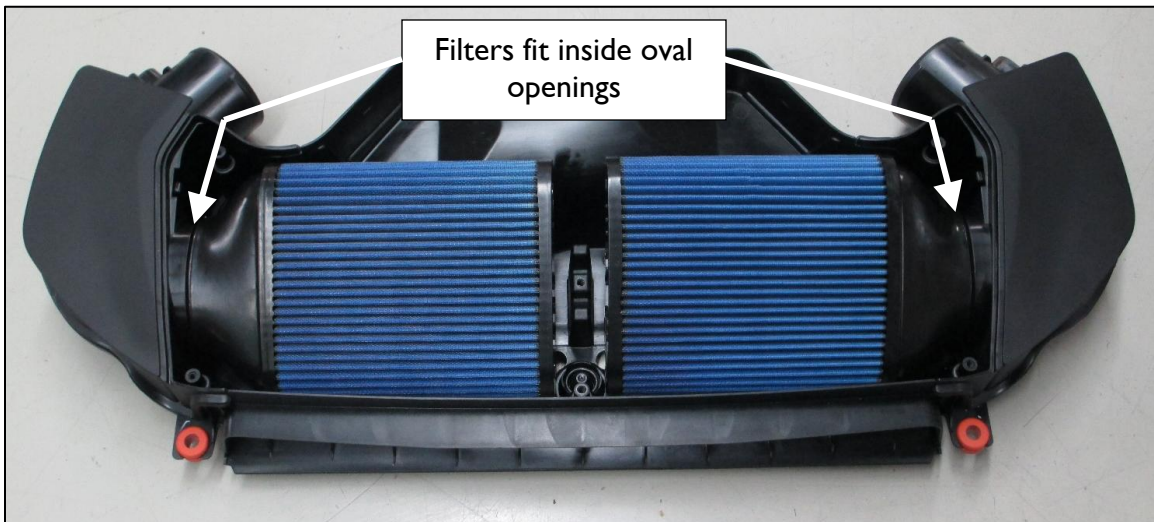
2. Remove the screw in the center of the airbox that fastens the factory air filters. Save this screw for installation of the Dinan Cold Air Intake.



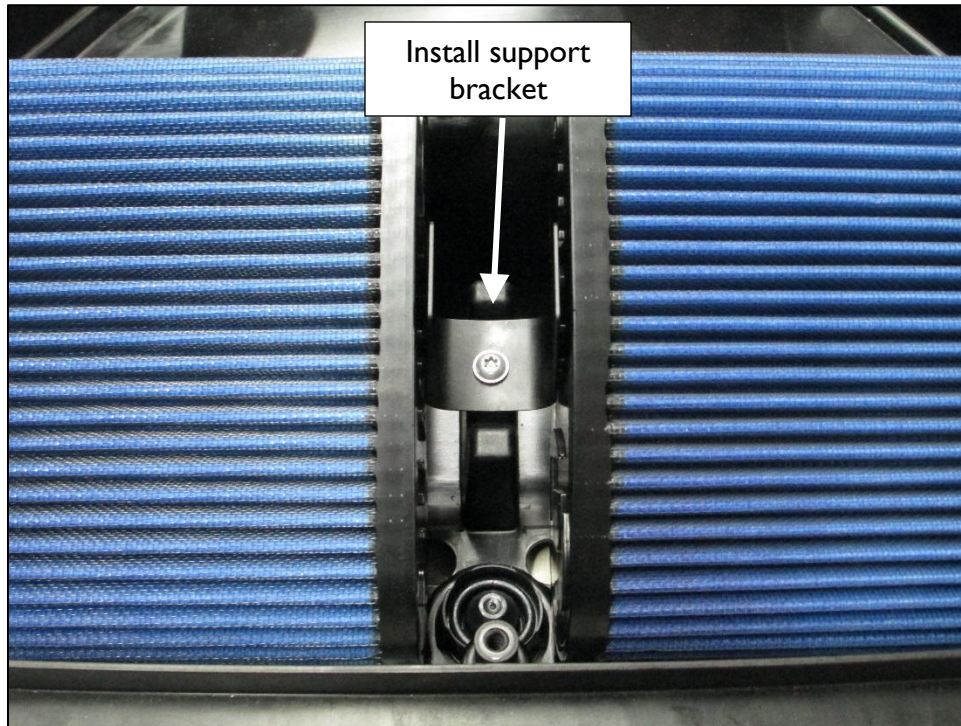
3. Remove the factory air filters.



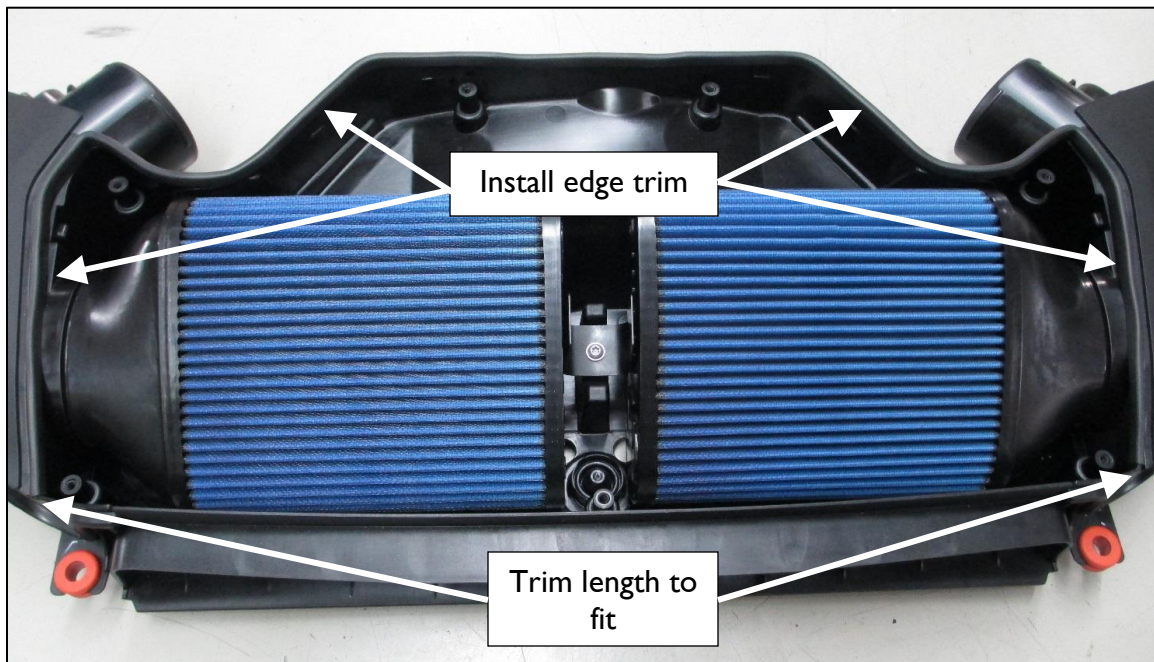
4. Install the Dinan air filters as shown. The open end of the Dinan air filters will slide inside the oval openings in the air box. The rubber "block" on the air filter cap points downward and helps hold the filters away from the air box bottom.

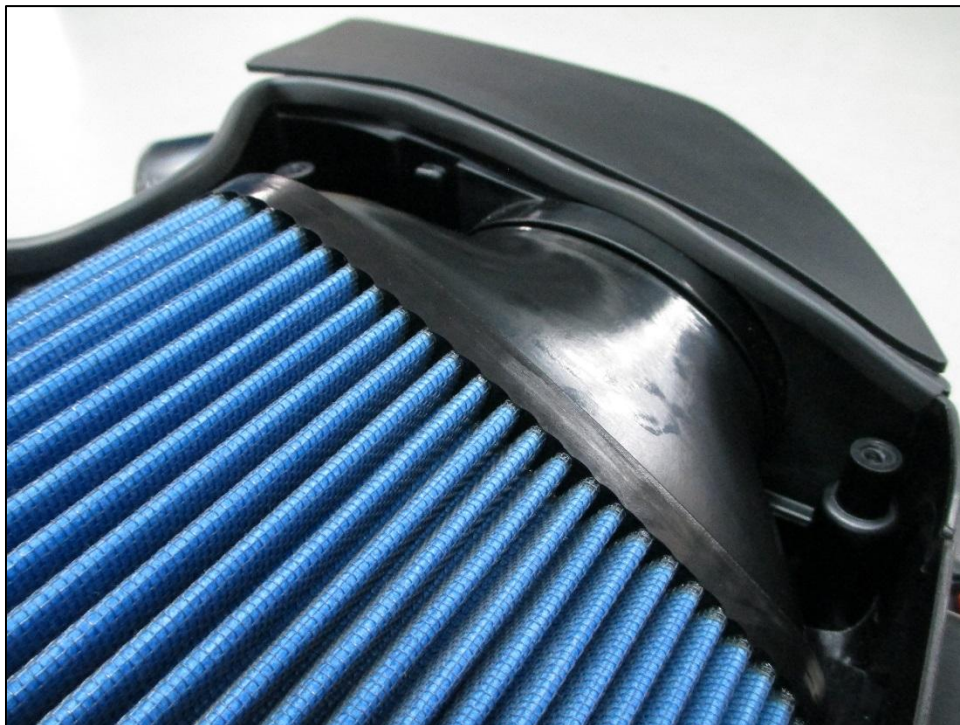


5. Install the filter support bracket supplied in the hardware kit using the factory screw.

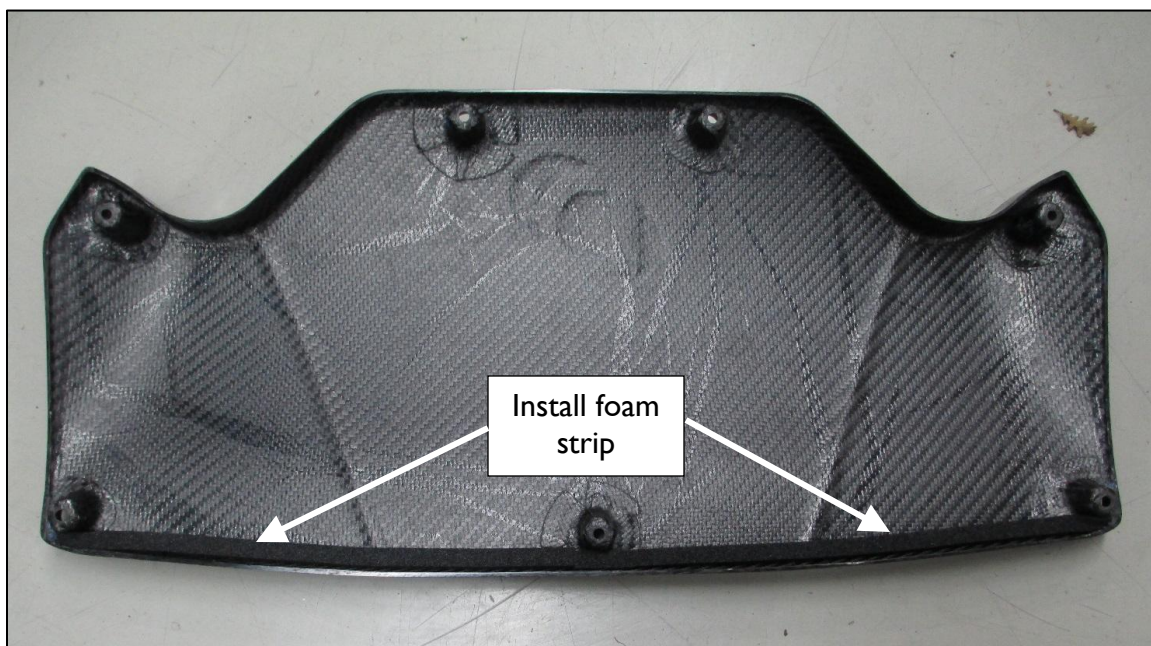


6. Install the supplied edge trim onto the airbox as shown in the figures below. Trim the length to fit as needed. Note that the trim stops at the front corners.

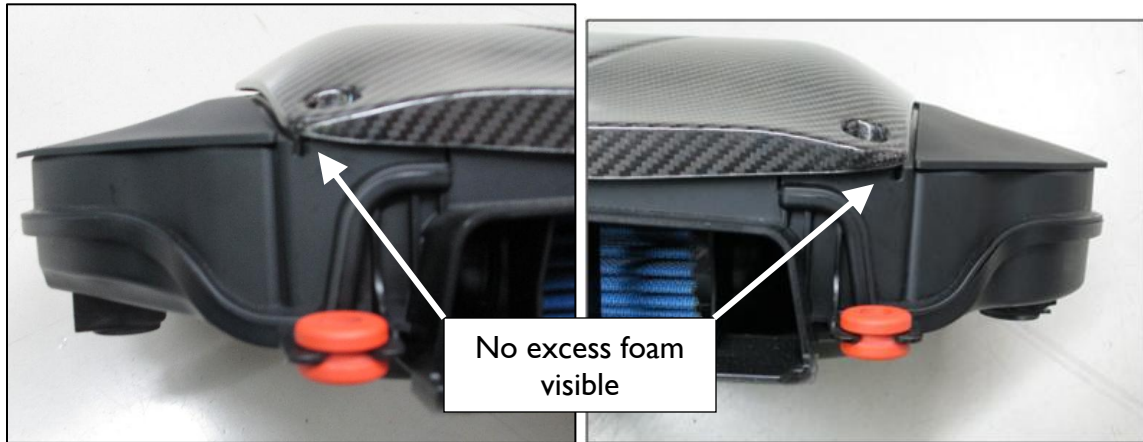




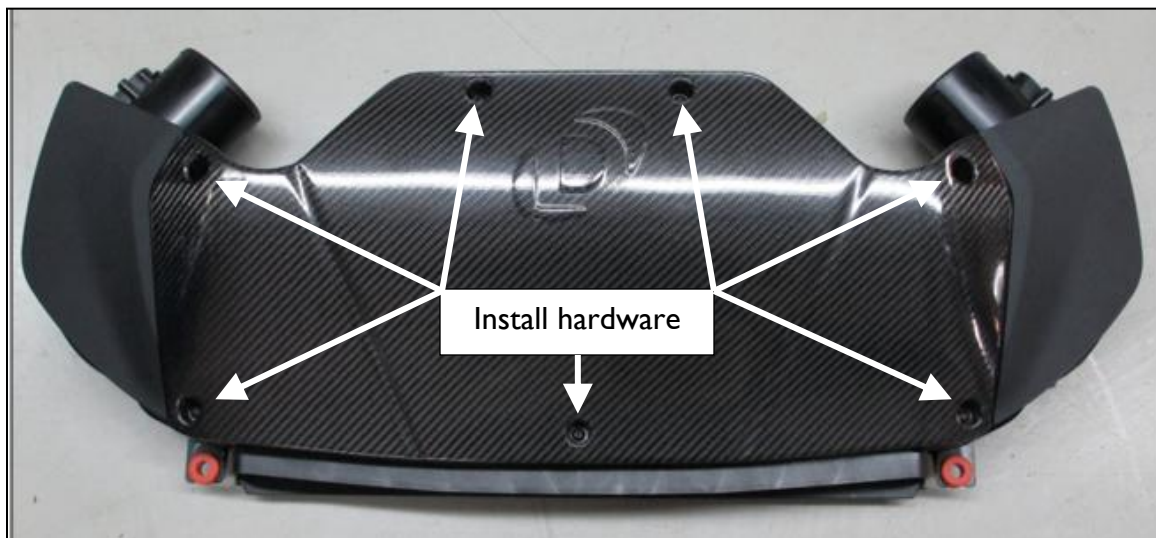
7. Install the supplied foam strip along the underside of the front edge of the carbon fiber Dinan airbox lid as shown. Trim the length of the foam strip to fit as needed.



8. Place the Dinan lid onto the airbox. Be sure there is no foam strip visually exposed once the lid is installed, as shown in the next two figures.



9. Install the Dinan lid using the factory hardware.



10. Happy motoring!