

Installation Guide

AWRON Display F2xDGA



BMW

- F20 5 - Doors
- F21 3 - Doors



Table of Contents

Table of Contents	2
Scope of delivery	3
Toolkit	4
Cabel system	5
Schematic	6
Installation Guide	
• Disassembly interior trim	7
• Disassembly panel under the glove box on passenger side	9
• Disassembly door sill on passenger side	12
• Disassembly side trim on the passenger side	13
• Expose the connector from the FEM control unit	14
• Dismounting plug CON 3	15
• Dismounting plug CON 2	16
• Unpin cable from connector	17
• Pin the cable into the connector	18
• Plug CON 3 into the connector	20
• Remove plug CON 2	21
• Disassembly trim on the passenger side	22
• Plug CON 10 connection	24
• Remove plug CON 10	25
Support & FAQs	28

Scope of delivery



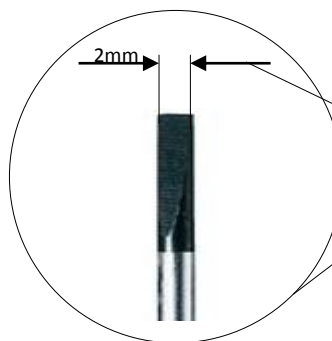
F2xDGA Display modul



Power cord set

Toolkit

Mounting wedge



Screwdriver TORX T25



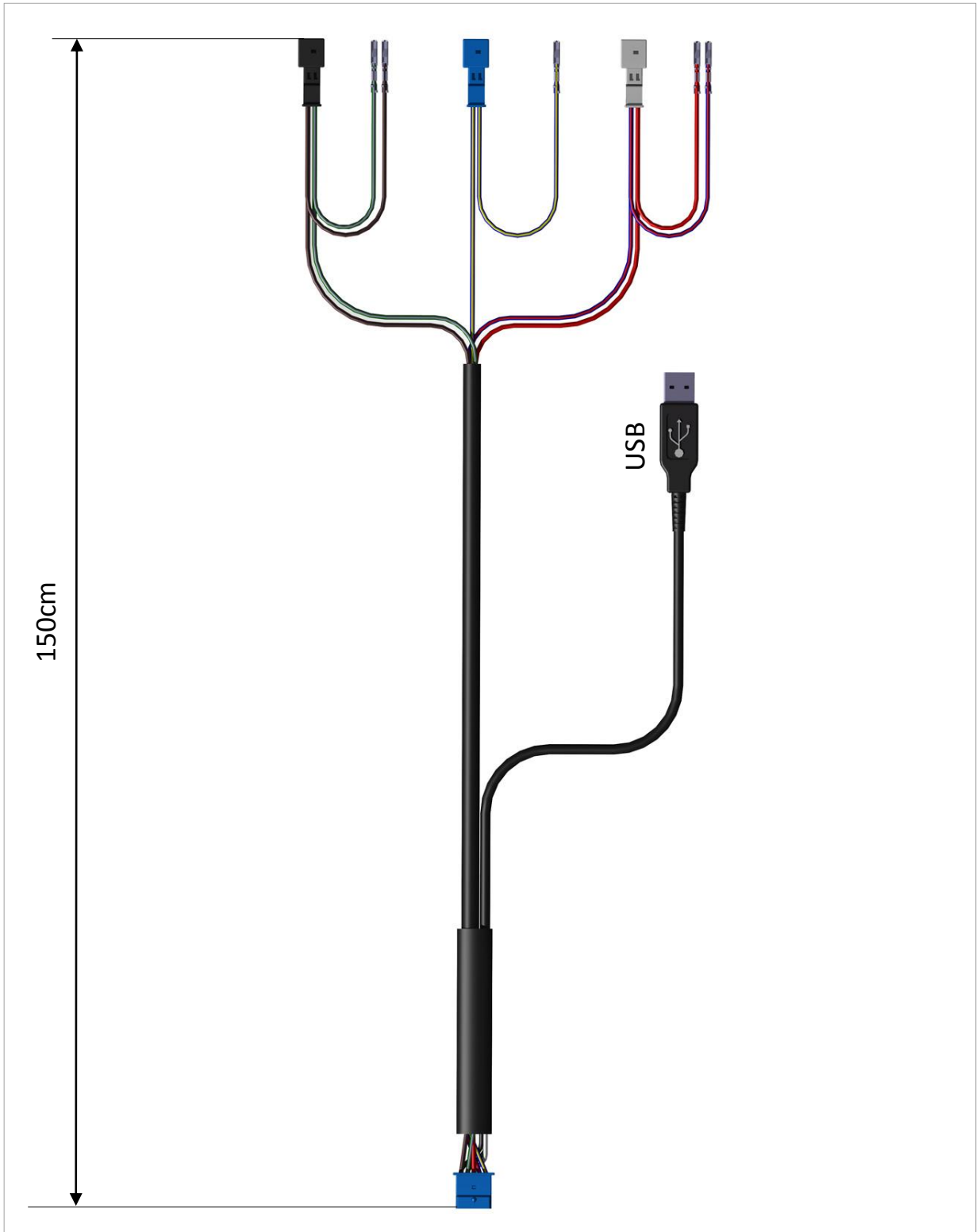
Socket wrench 10mm



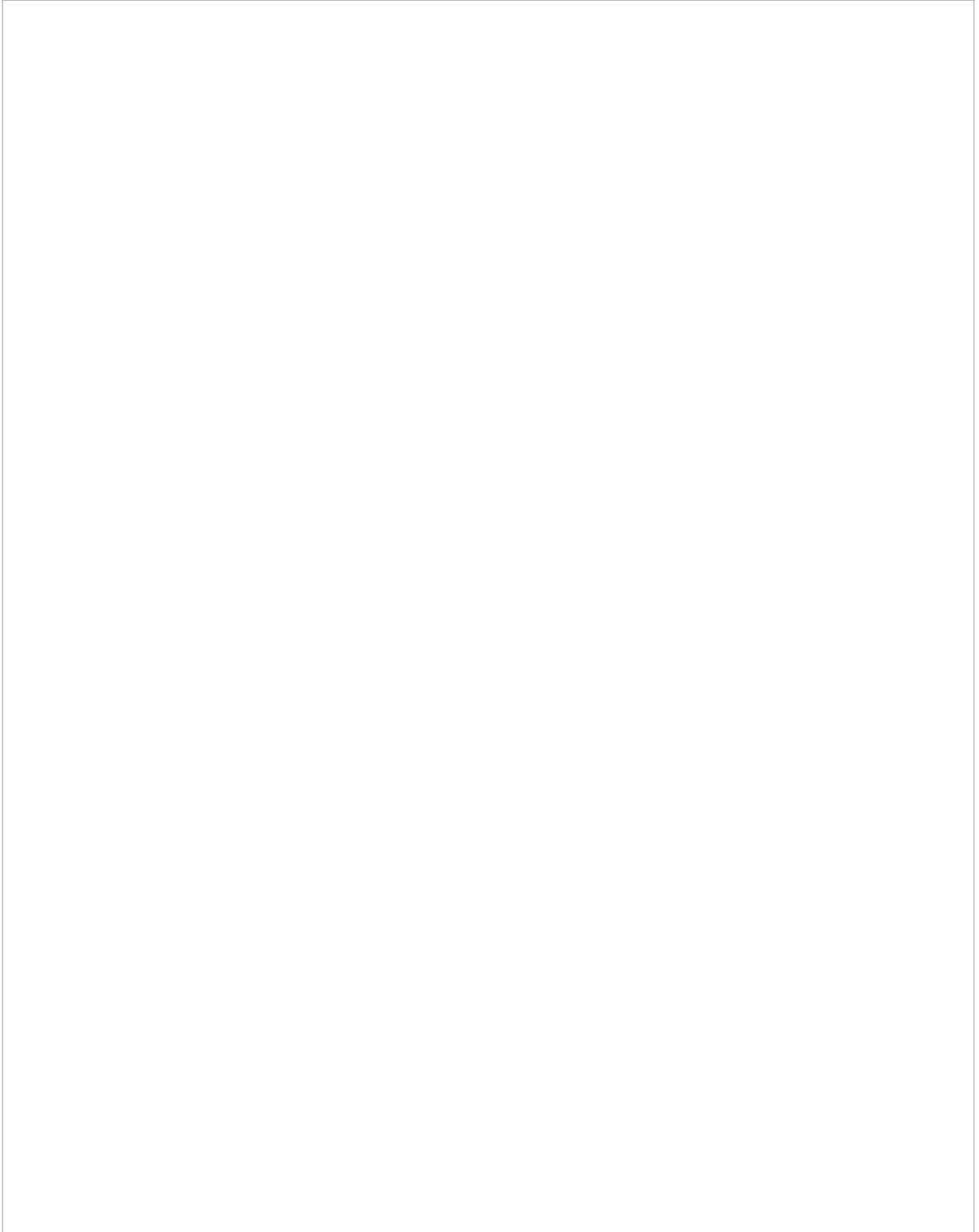
Flat screwdriver 2mm



Cabel system



Schematic



Disassembly interior trim

Remove with a plastic wedge strip the interior. Begin from the right. Pay attention to the connector on startup button and the operating unit warning lights, etc. (see picture below right) Disconnect the connectors, then you can remove air vent.



Disassembly interior trim



Disassembly panel under the glove box on passenger side

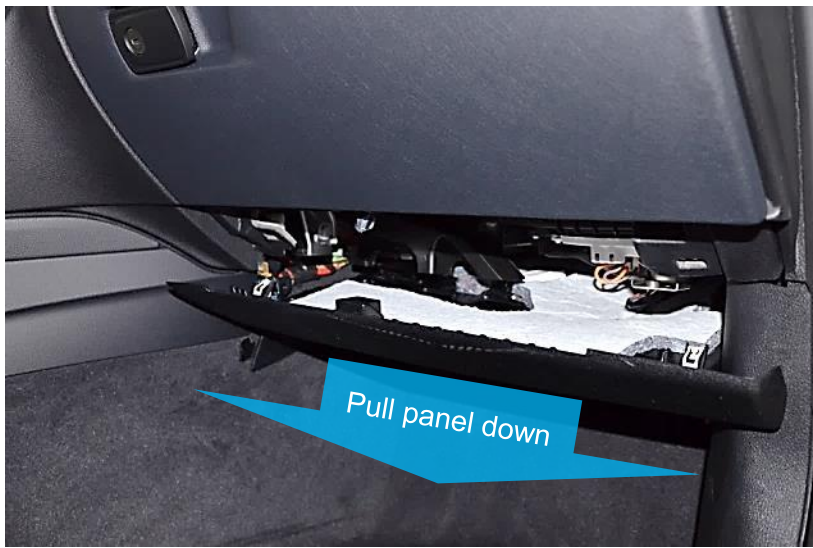


Hex, wrench size 8 mm



Hex, wrench size 8 mm

Disassembly panel under the glove box on passenger side

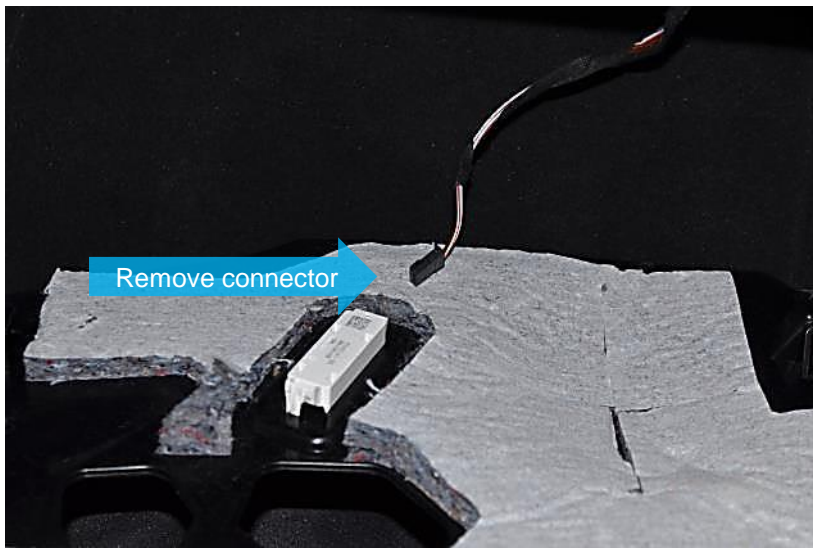


No tools required



No tools required

Disassembly panel under the glove box on passenger side



No tools required

Disassembly door sill on passenger side



Use a plastic wedge

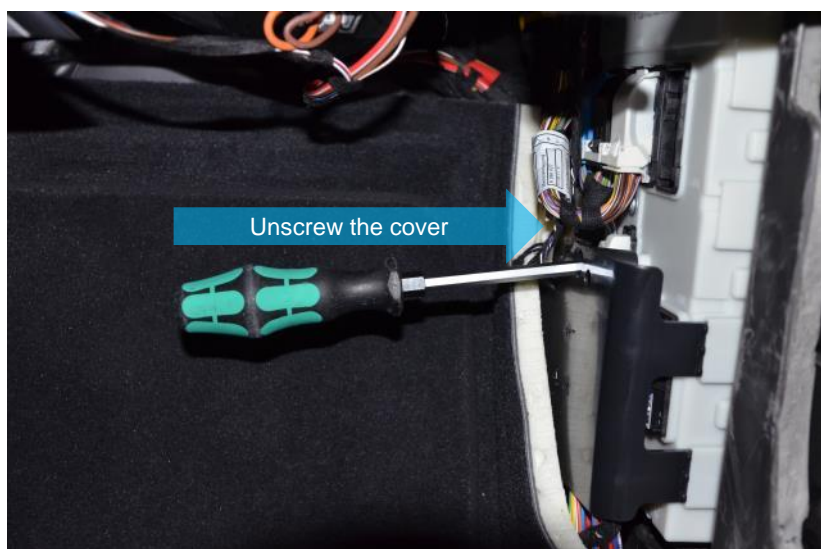


Use a plastic wedge

Disassembly side trim on the passenger side

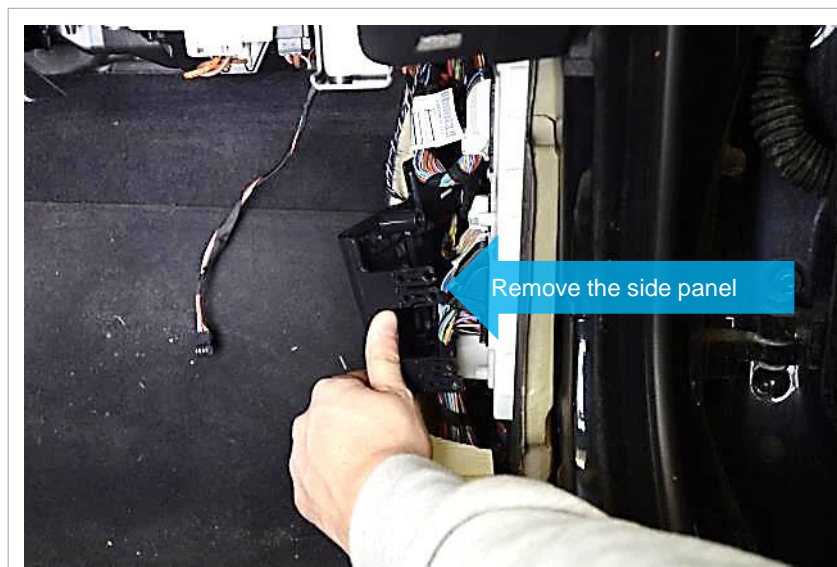


Use a plastic wedge

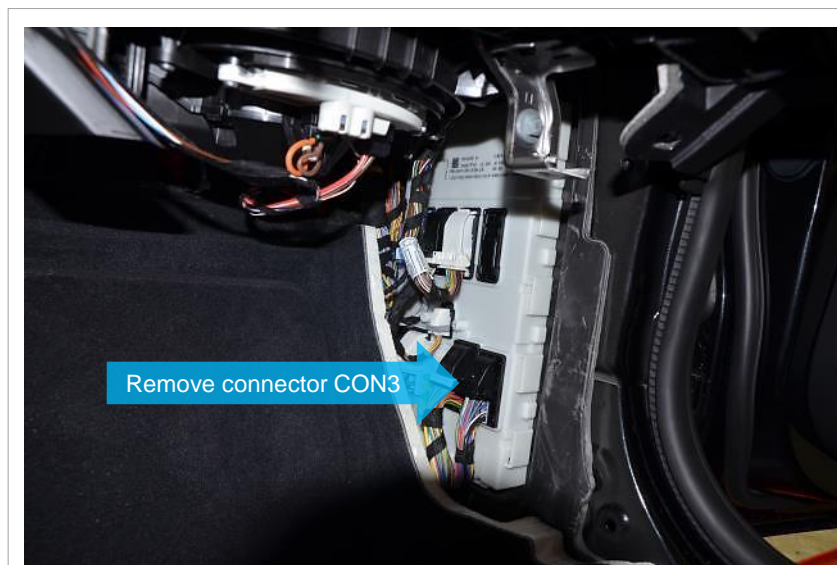


Screwdriver TORX T25

Expose the connector from the FEM control unit

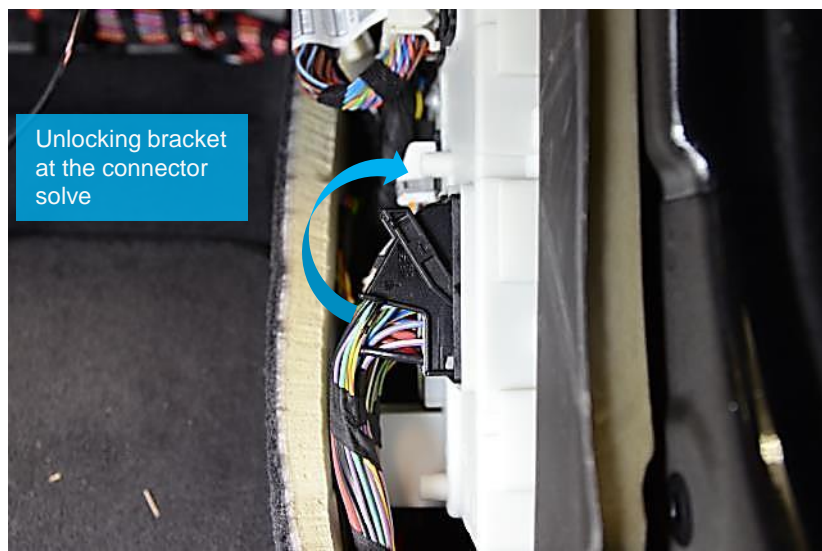


No tools required

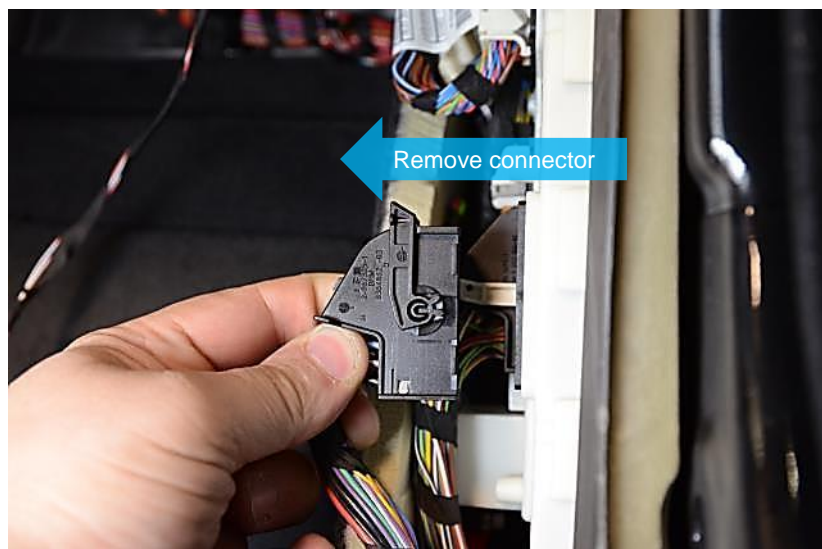


No tools required

Dismounting plug CON 3

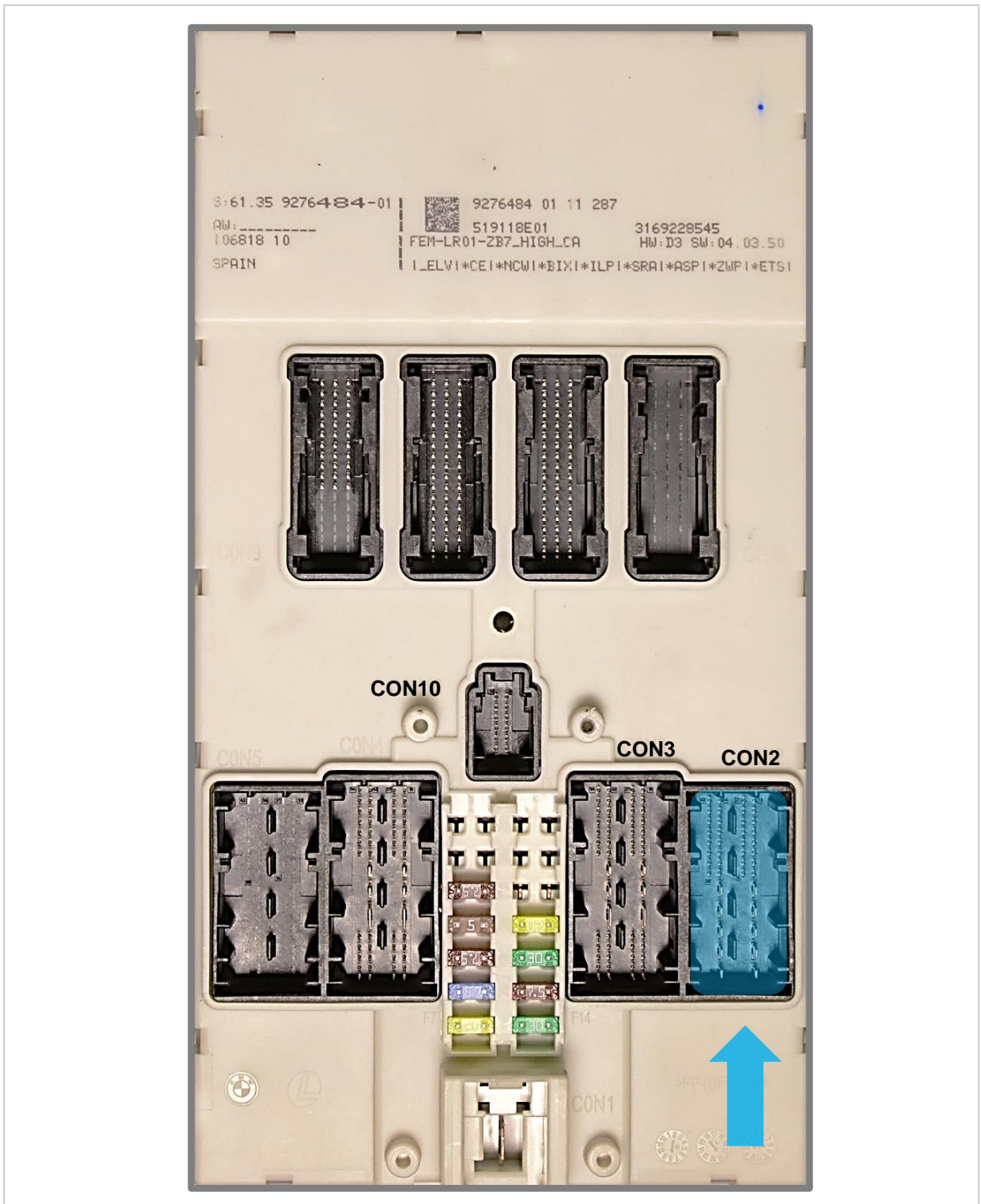


No tools required

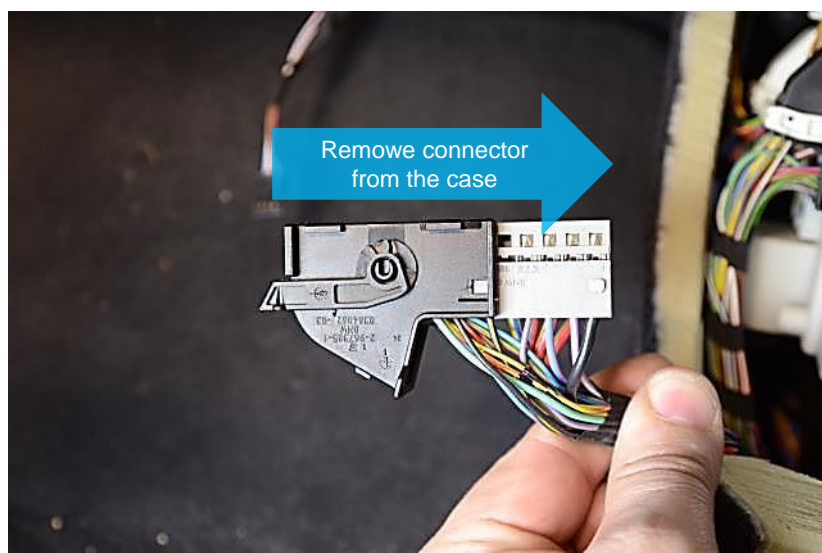


No tools required

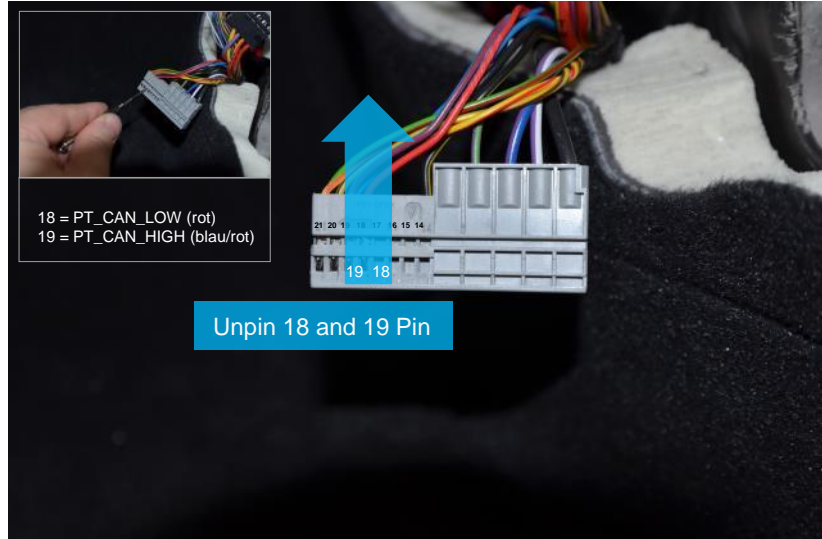
Dismounting plug CON 2



Unpin cable from connector

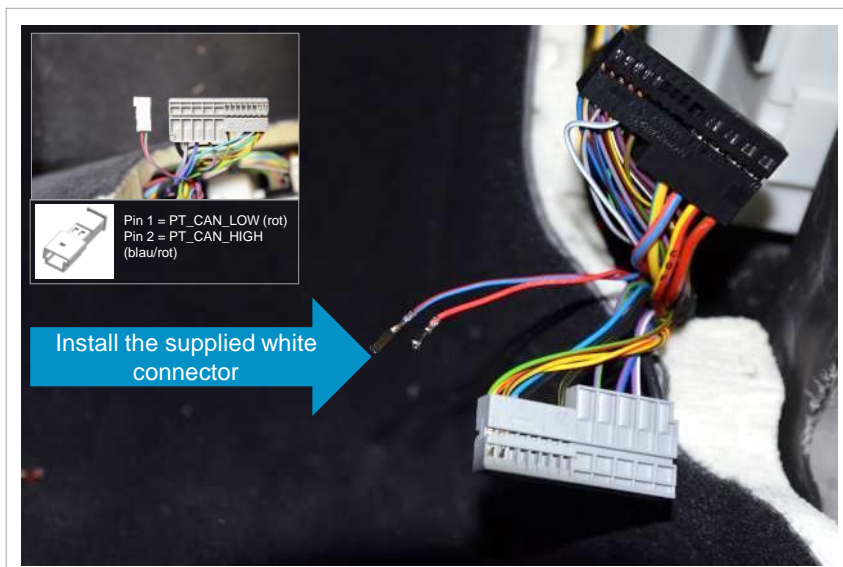


Flat screwdriver 2mm

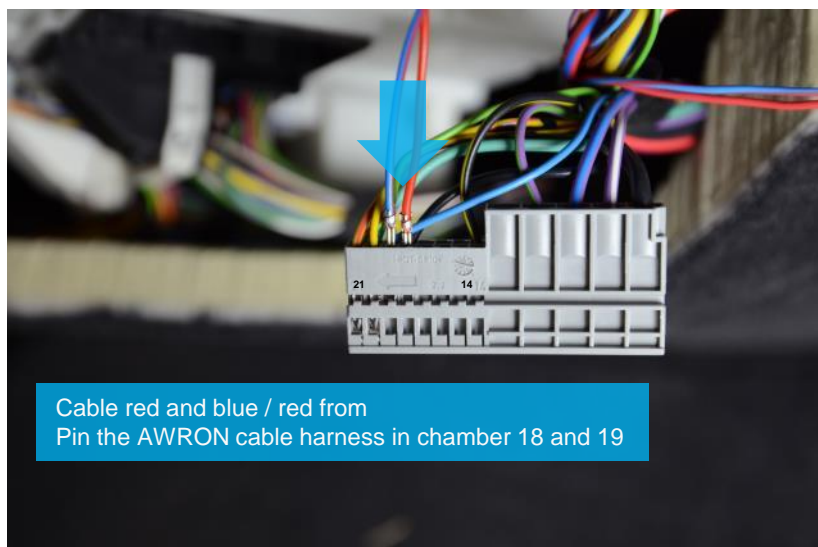


Flat screwdriver 2mm

Pin the cable into the connector

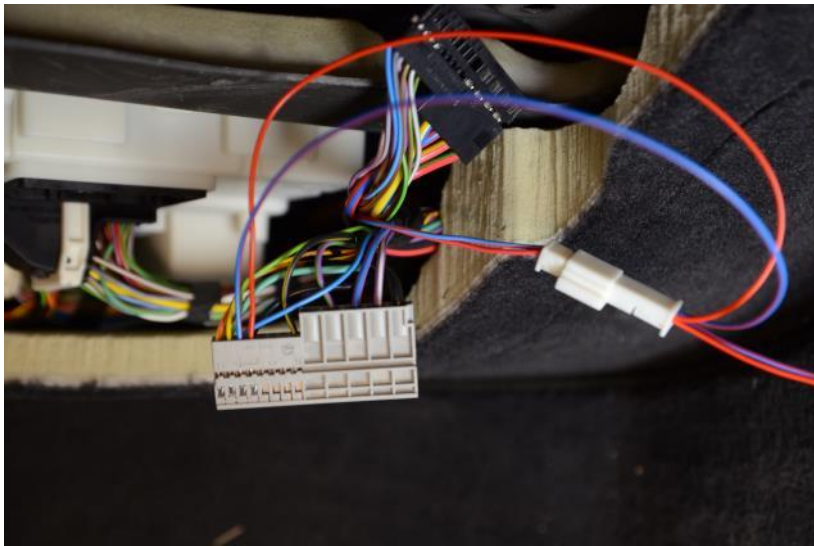


No tools required



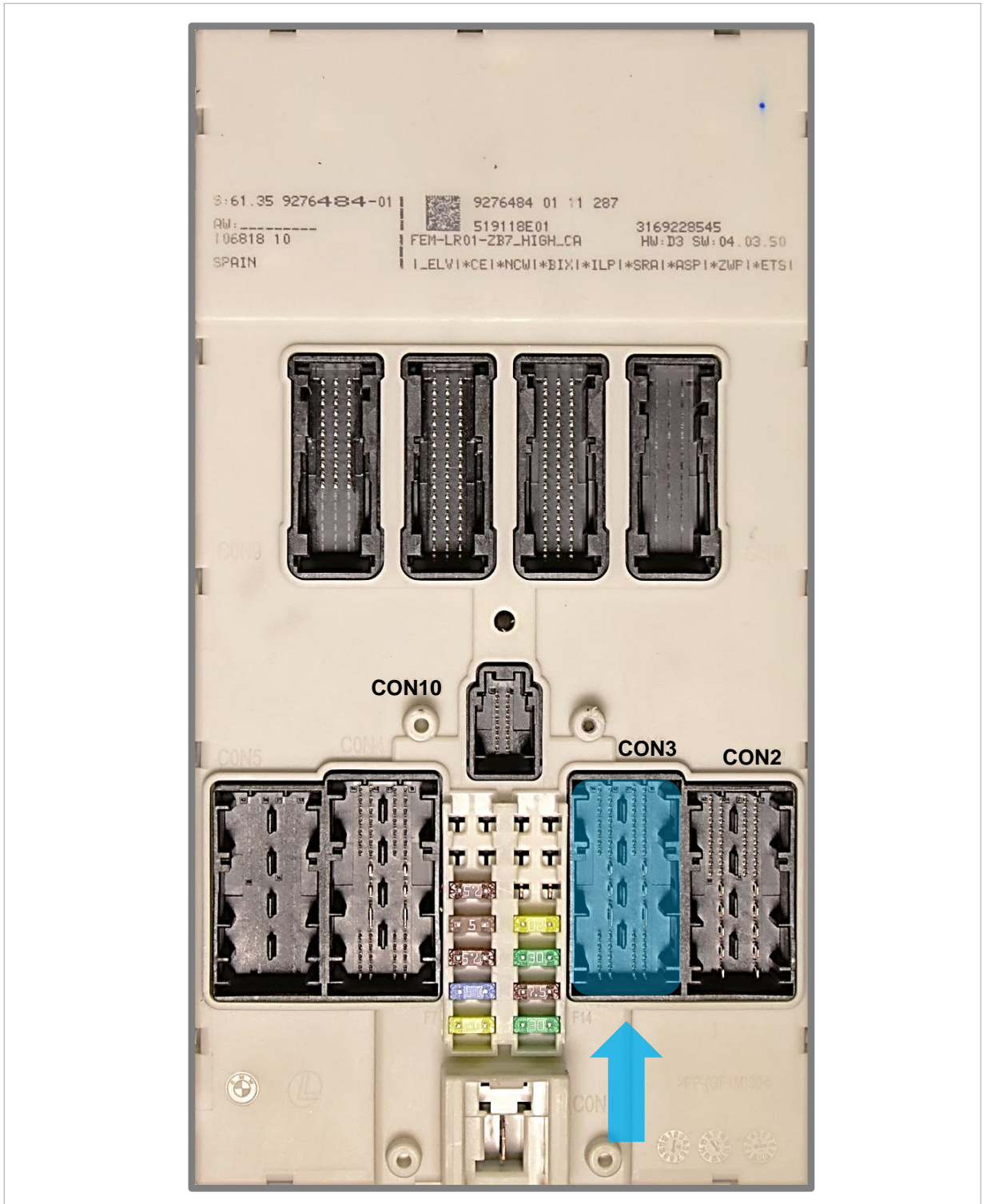
No tools required

Pin the cable into the connector

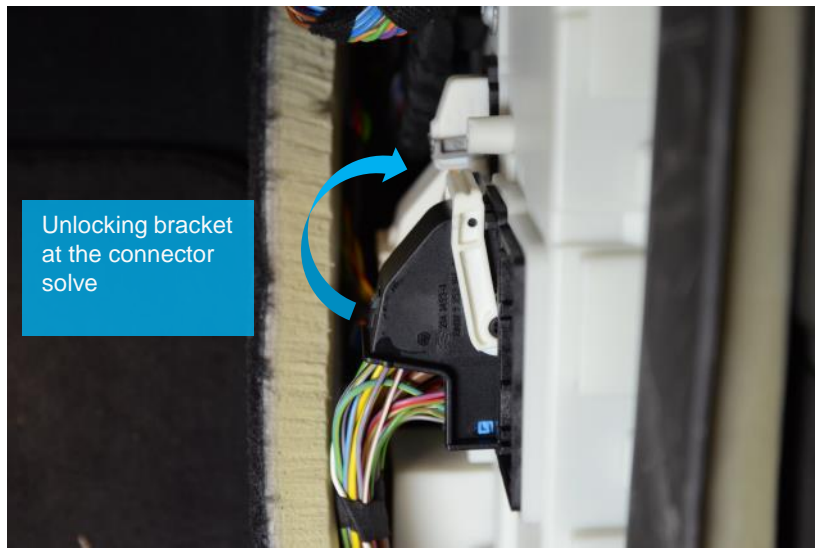


No tools required

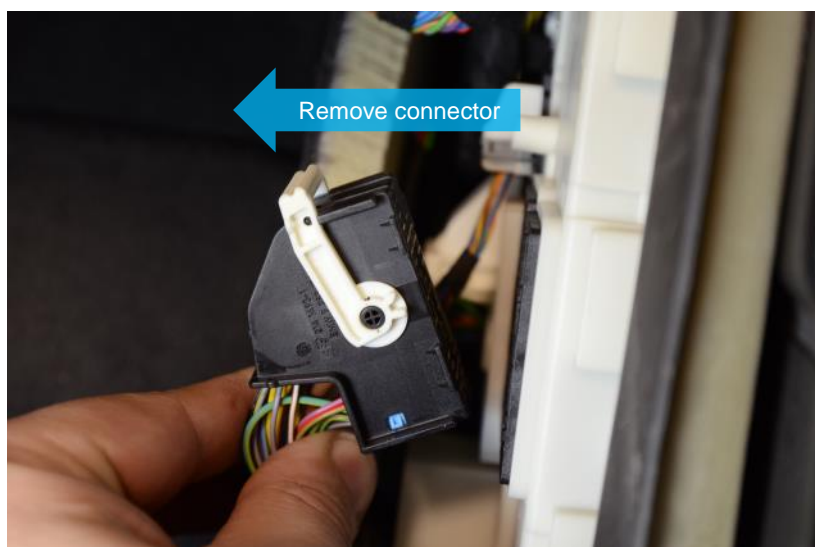
Plug CON 3 into the connector



Remove plug CON 2

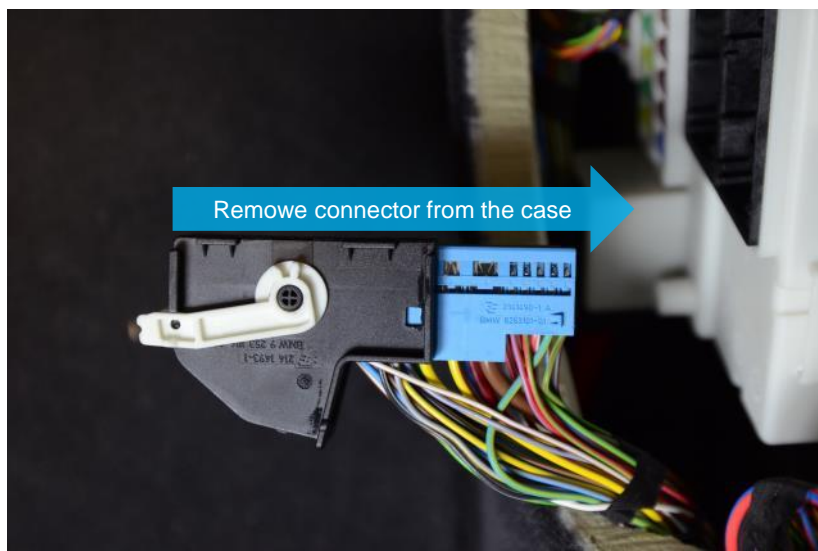


Kein Werkzeug notwendig

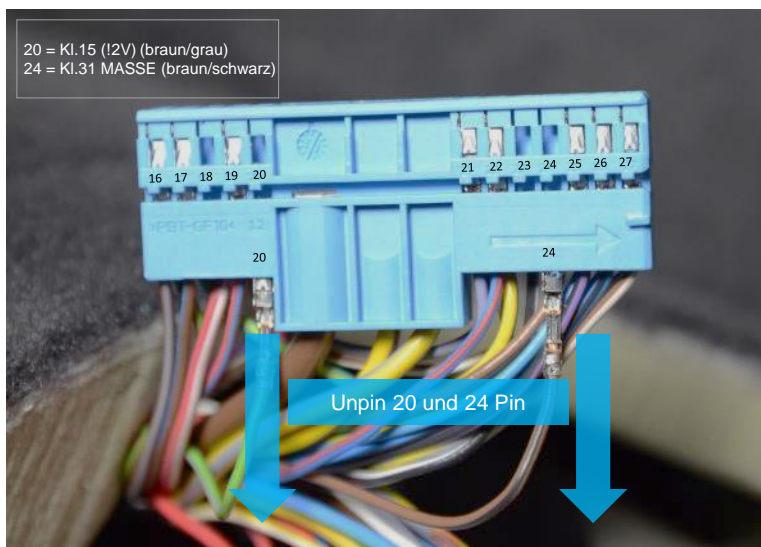


Kein Werkzeug notwendig

Disassembly trim on the passenger side

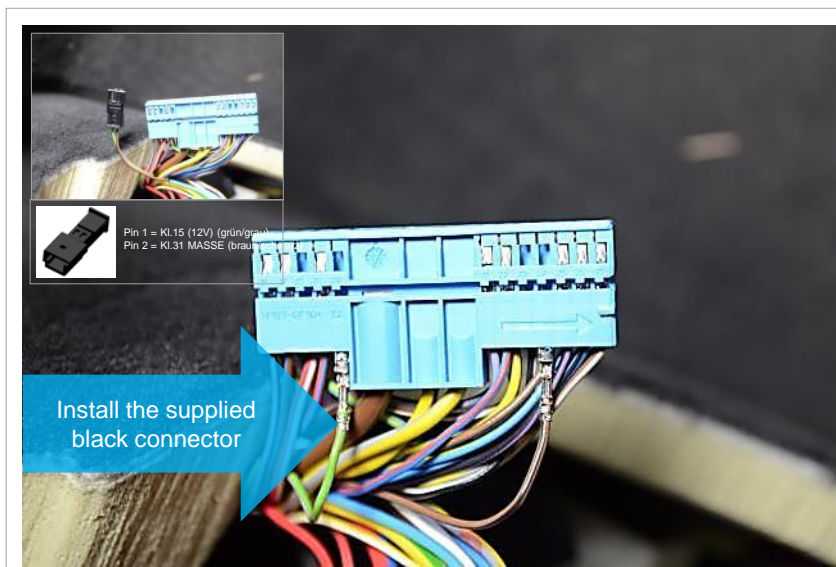


No tools required

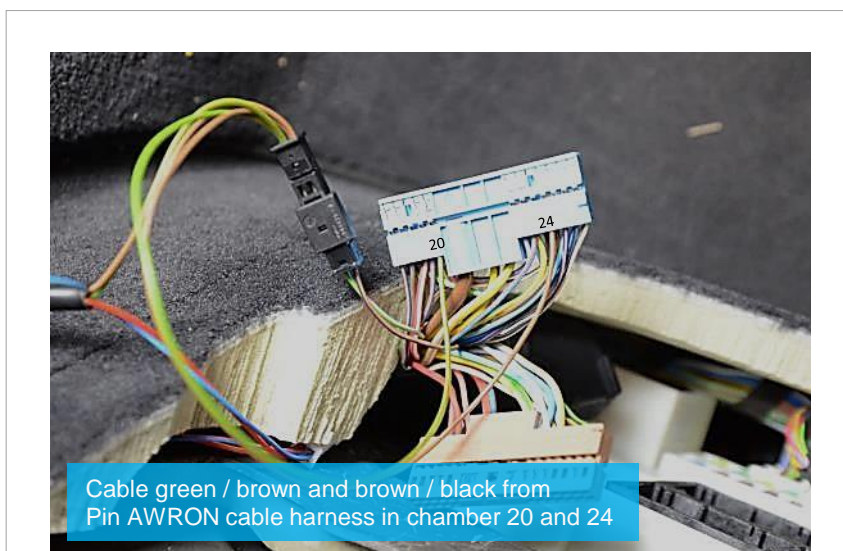


Flachschraubenzieher 2mm

Disassembly trim on the passenger side

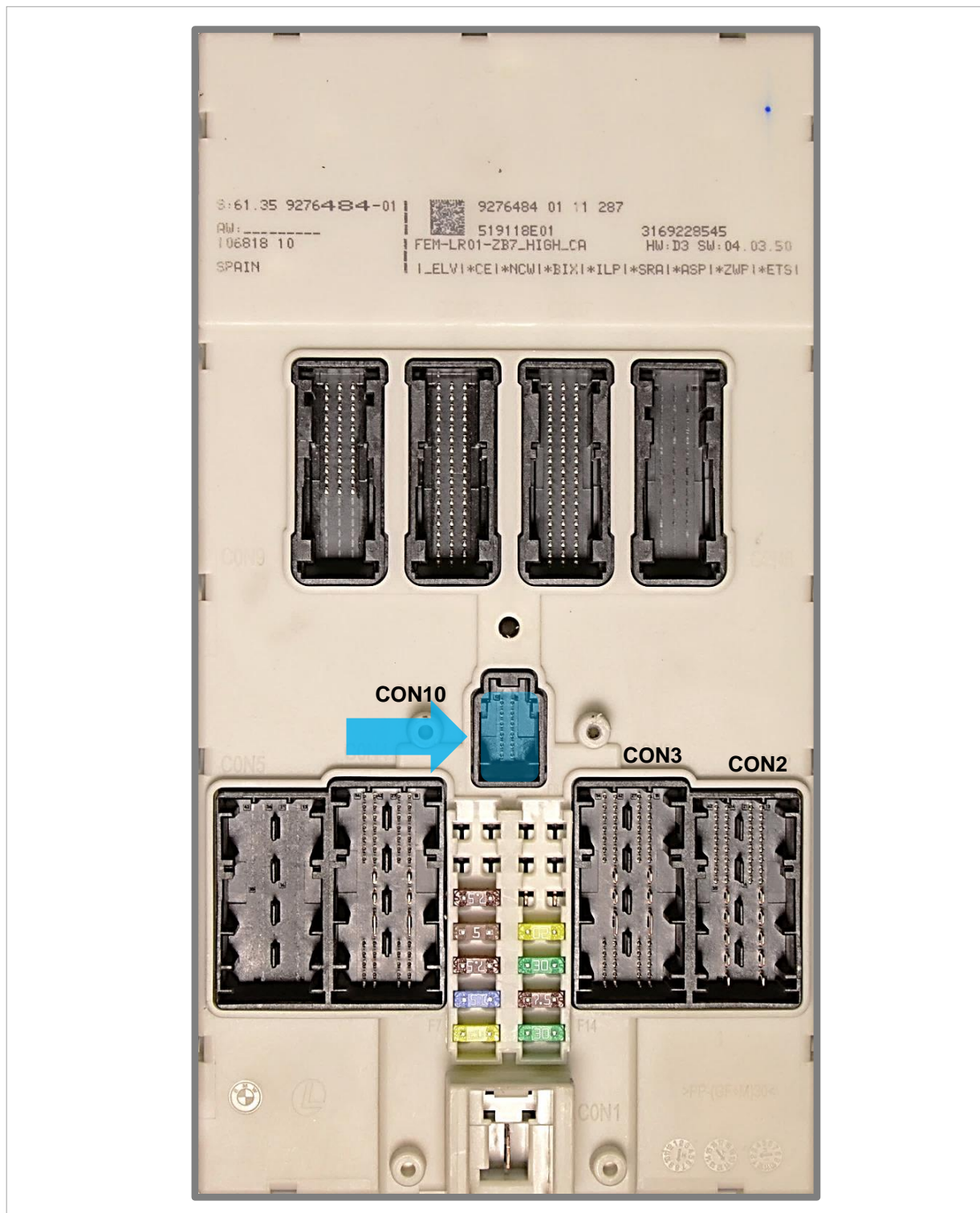


No tools required

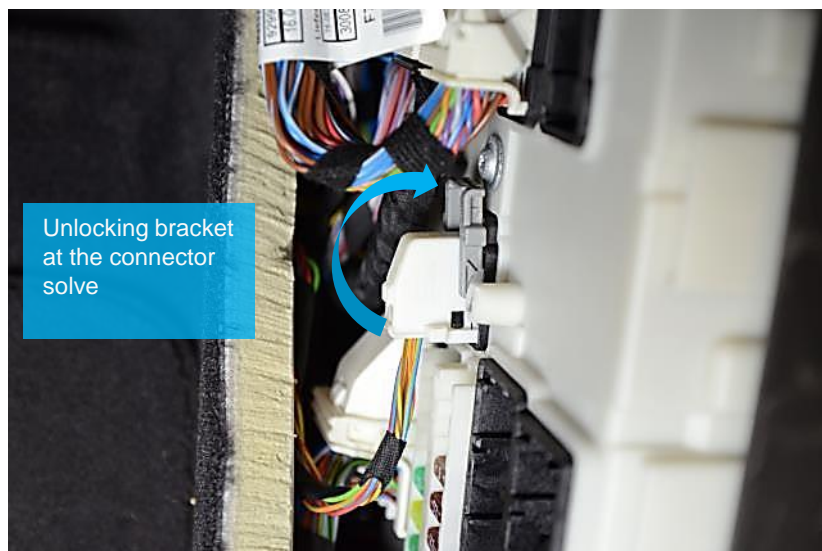


No tools required

Plug CON 10 connection



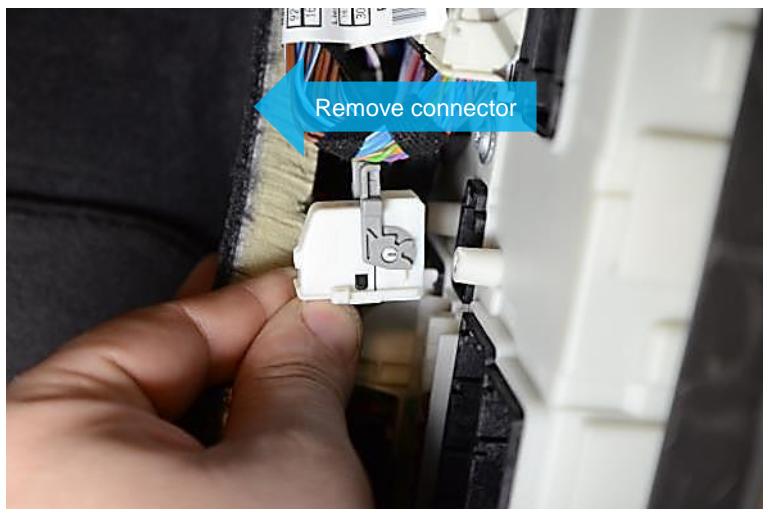
Remove plug CON 10



Unlocking bracket
at the connector
solve



No tools required

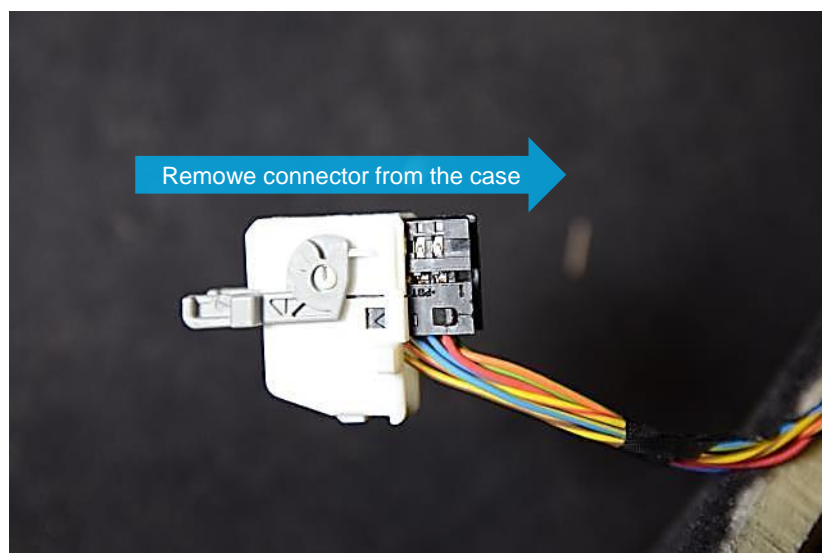


Remove connector

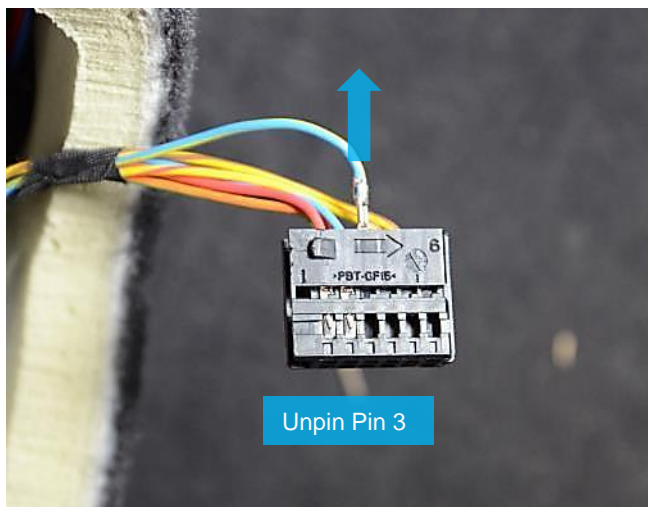


No tools required

Remove plug CON 10

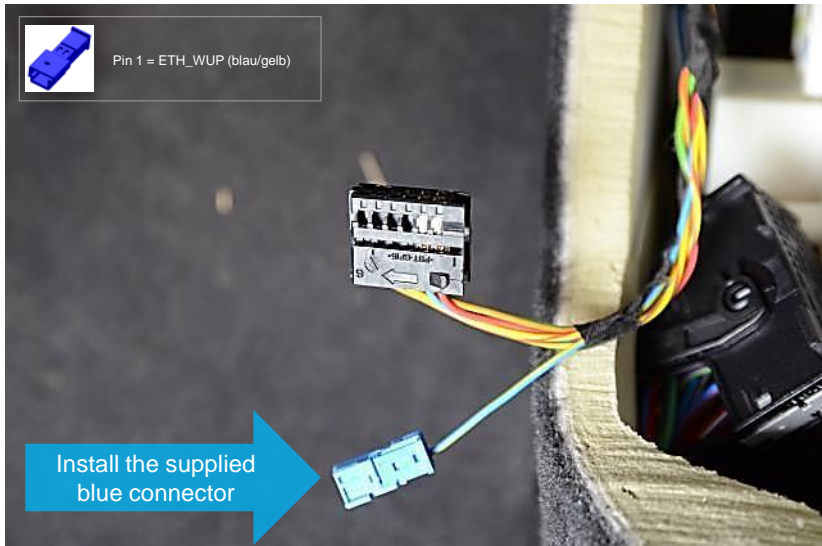


No tools required




Flachschraubenzieher 2mm

Remove plug CON 10


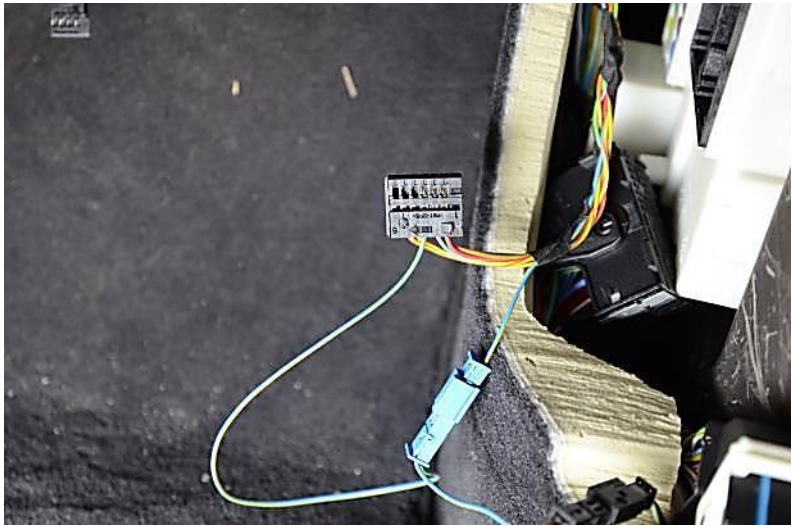


Pin 1 = ETH_WUP (blau/gelb)

Install the supplied blue connector



No tools required



No tools required

Support & FAQs

For all enquiries concerning your AWRON display system, or if you have problems with installation guide the AWRON support team at support@awron.de are at your service.

Please also see us and our other AWRON products on our website www.awron.de

